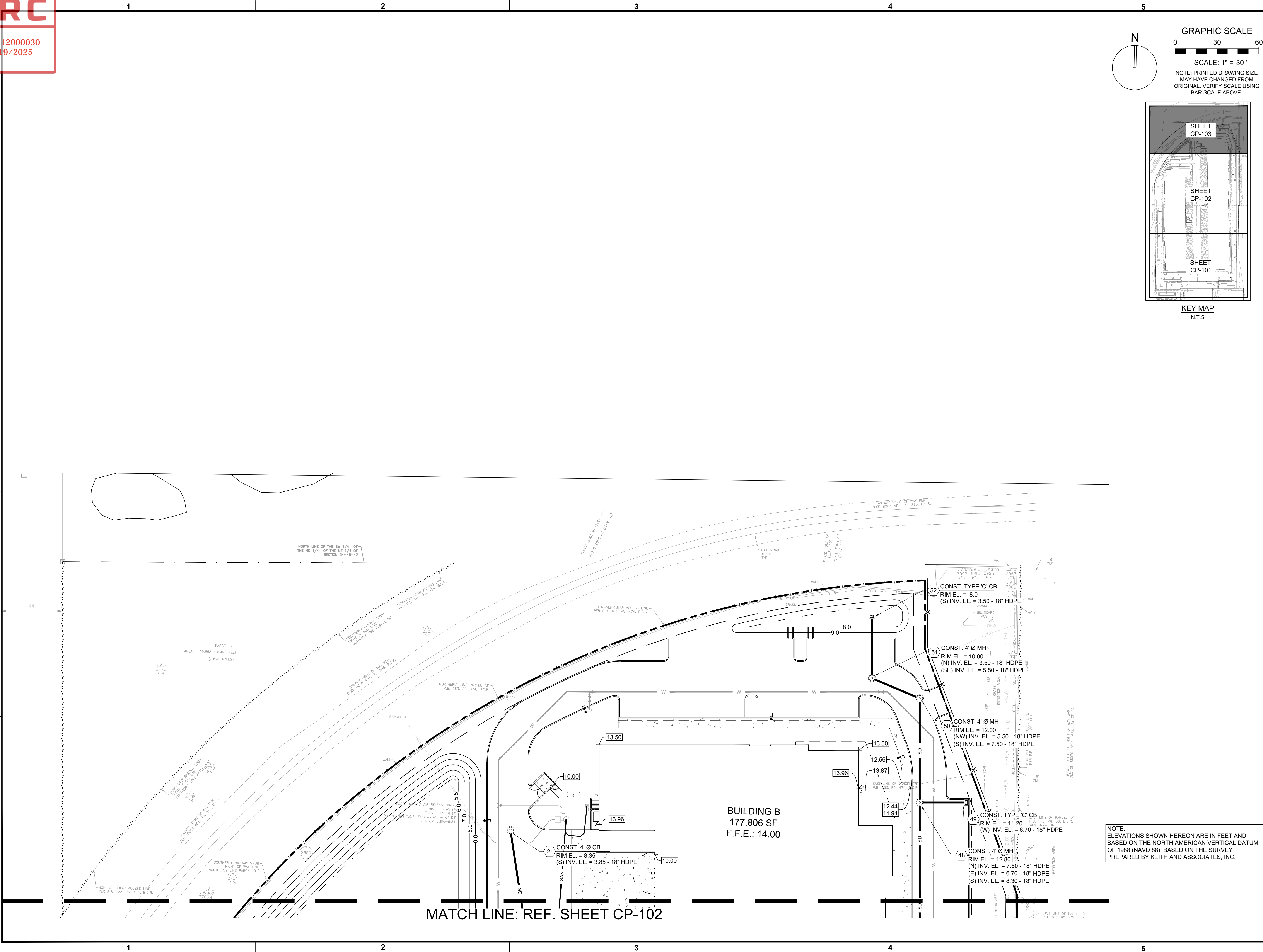


D

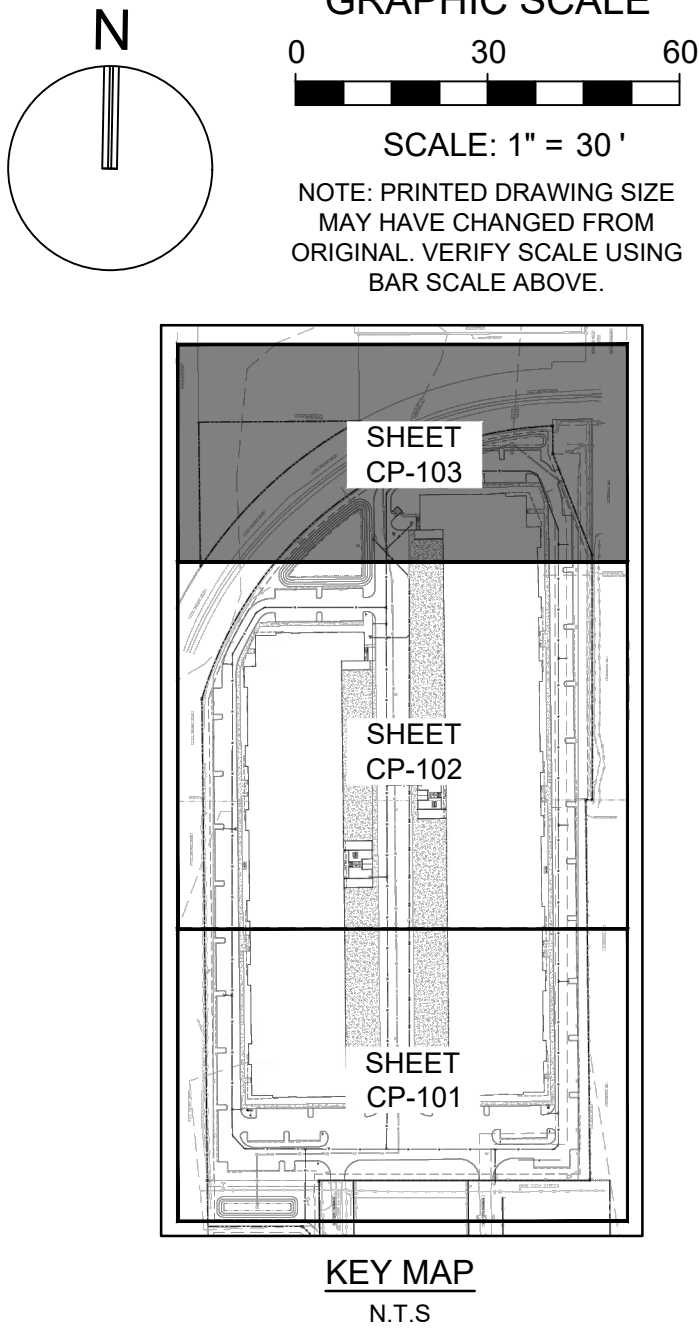
C

B

A



NOTE:
ELEVATIONS SHOWN HEREON ARE IN FEET AND
BASED ON THE NORTH AMERICAN VERTICAL DATUM
OF 1988 (NAVD 88). BASED ON THE SURVEY
PREPARED BY KEITH AND ASSOCIATES, INC.



KEITH

301 East Atlantic Blvd.
Pompano Beach, FL 33060
PH: (954) 788-3400

Florida Engineering Business License: CA7928
Florida Surveyor and Mapper Business License: LB6860
Florida Landscape Architecture Business License: LC26000457

REVISIONS		
NO.	DESCRIPTION	DATE

RESPONSIBILITY FOR THE USE OF THESE
PLANS PRIOR TO OBTAINING PERMITS FROM
ALL AGENCIES HAVING JURISDICTION OVER
THE PROJECT WILL FALL SOLELY UPON THE
USER.

ISSUE DATE:	10/15/2025
DESIGNED BY:	BB
DRAWN BY:	JS
CHECKED BY:	NW
BID-CONTRACT:	

THOMAS F. DONAHUE, P.E.
FLORIDA REG. NO. 60529
(FOR THE FIRM)

CLIENT

FIRST
INDUSTRIAL

PROJECT

FIRST 95 DISTRIBUTION
CENTER- PHASE II
1000-1041 NW 12th Ter.
Pompano Beach, FL

SHEET TITLE

PAVING, GRADING, AND
DRAINAGE PLAN

SHEET
NUMBER CP-103

PROJECT
NUMBER 10607.14

STATUS: PRELIMINARY

Drawing name: Q:\10607.14 - First 95 Distribution Center - PH 2 - First Industrial\Engineering\Cadd\10607.14-CP-1XX.dwg
Plotted by: dosuna On 10/14/2025 8:27 AM